

Appraisal No: 000009201001

Purpose of Appraisal
Function of Appraisal

Approximate replacement value
Replacement

One stamped & tested 14KT two-tone gold ladies hand assembled diamond ring with a tapered shank with a bright polish finish. Condition is used. Ring size is five and three-quarters. One round brilliant cut diamond is prong set in the center of a cluster of six prong set round brilliant cut diamonds located in the top center of the ring.

Fifteen tapered baguette cut diamonds are channels set on each side of the round brilliant cluster. Thirteen round brilliant cut diamonds are channel set on the sides of the curved sides beneath the tapered baguettes. this ring is very attractive and an eye catcher. Trademark is J. BR. Identified with markings of "14K". Containing:



One prong set round brilliant cut diamond, measuring 3.56 - 3.53 x 2.13mm (depth est.) approximate weight of 0.16ct. All diamonds in this article were graded while set in ring. estimated measurements were used to calculate the diamond weight by use of formulas. Color grade was estimated.

Clarity	SI-1
Color	E - G
Cut	Very Good

Six prong set round brilliant cut diamonds, measuring 3.23 - 2.00 x 1.57mm (depth est.) approximate total weight of 6 Stones = 0.39ct. Average estimated measurements were used to calculate the diamond weight by use of formulas. Color grade was estimated.

Clarity	SI-1
Color	F - H
Cut	Very Good

Twenty-six channel set round brilliant cut diamonds, measuring 2.03 - 2.00 x 1.21mm (depth est.) approximate total weight of 26 Stones = 0.78ct. Average estimated measurements were used to determine the diamond weight by use of formulas. Color grade was estimated.

Clarity	SI-1
Color	F - H
Cut	Very Good

Continued on next page...

Certified Diamonds
Colored Gems
Appraisals

**MADISON
JEWELERS**
simple. elegant.

5310 Providence Road
Virginia Beach VA 23464
(757) 200-0609 • (877) 865-0609
www.madison-jewelers.com
E-mail: madisonjewelers@cox.net

Custom Manufacturing
Expert Repairs
Watches and Jewelry

Appraisal No: 000009201001

Thirty channel set baguette cut (tapered) diamonds, measuring from 3.60 x 1.20 x 1.02mm (depth est.) to 4.00 x 1.60 x 1.36mm (depth est.) approximate total weight of 30 Stones = 1.74ct. Average estimated measurements were used to calculate the diamond weight by use of formulas. Color grade was estimated. *→ one broken bag.*

Clarity **VS-2 to SI-2**
Color **E - G**
Cut **Very Good**

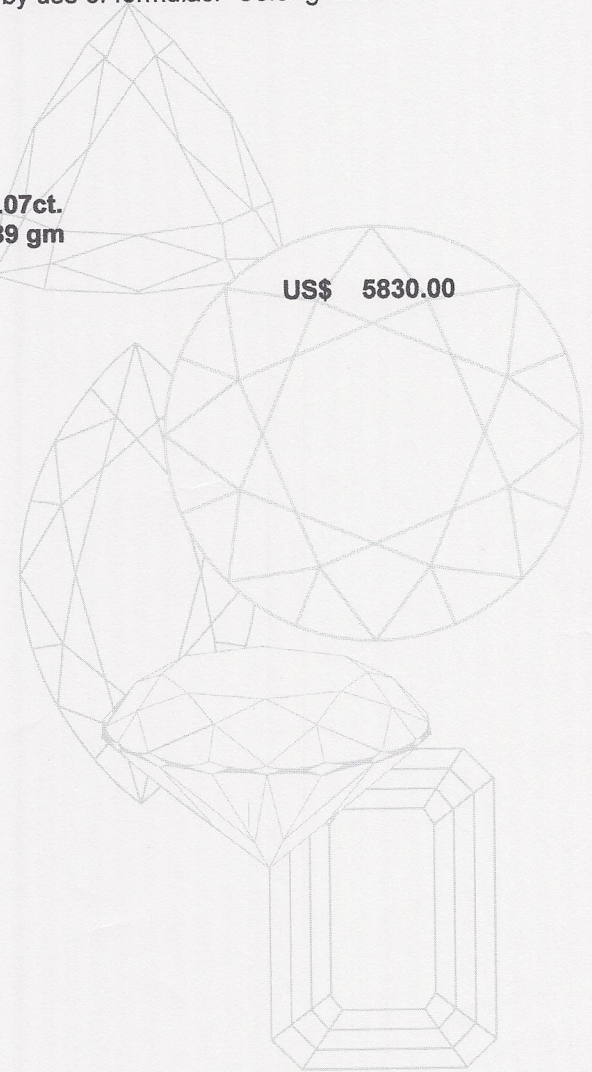
Total Weight of Diamonds
Total Weight of Ring

Total Approximate replacement value

GOLD @ 948.80 US

3.07ct.
8.89 gm

US\$ 5830.00



Date: July 20, 2009

James L. Peddicord
*** James L. Peddicord ***
*** Graduate Gemologist***