

Appraisal No: 000010025003

Purpose of Appraisal
Function of Appraisal

Retail replacement value
Insurance

One pair stamped & tested 14KT white gold ladies hand assembled diamond earrings with standard backs with a Rhodium plated finish. Condition is new. Two round brilliant cut diamonds are set in three prong martini style mounts. Trademark is Stuller. Identified with markings of "14K". Containing:

One prong set round brilliant cut diamond, measuring 4.19 - 4.16 x 2.55mm (depth est.), 1.00% GTCF approximate weight of 0.27ct. All diamonds in this article were graded while set. Estimated measurements were used to calculate the diamond weight by use of formulas. Color grade was obtained by use of colorimeter.

Clarity **SI-1**
Color **D - E**
Cut **Very Good**

One prong set round brilliant cut diamond, measuring 4.08 - 3.97 x 2.43mm (depth est.) approximate weight of 0.24ct.

Clarity **SI-2**
Color **K - L**
Cut **Very Good**

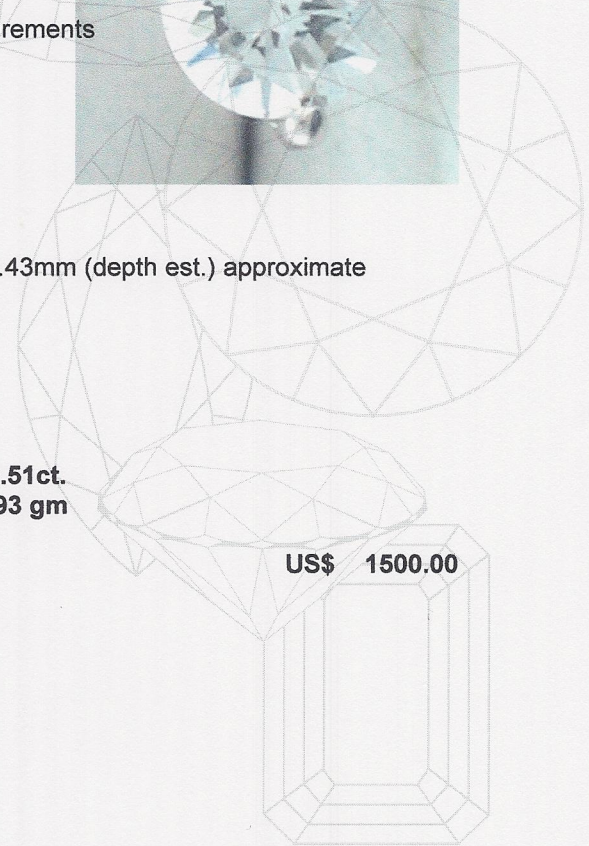
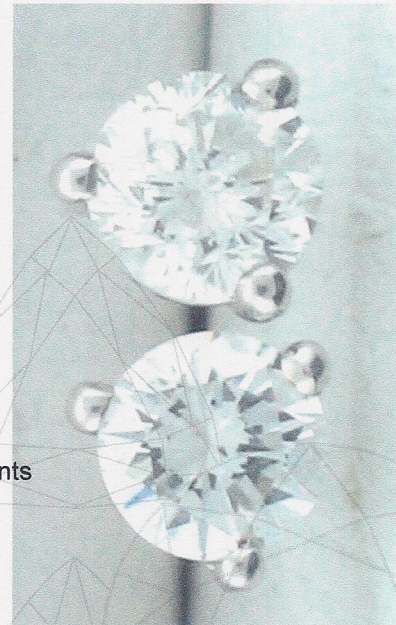
Total Weight of Diamonds
Total Weight of Earrings

0.51ct.
0.93 gm

Total Retail replacement value

US\$ 1500.00

GOLD @ 1097.20 US



James L. Peddicord
*** James L .Peddicord ***
*** Graduate Gemologist***

Date: January 25, 2010