

Appraisal No: 000011134002

Purpose of Appraisal
Function of Appraisal

Retail replacement value
Insurance

One ladies stamped 14KT & platinum yellow gold hand assembled diamond engagement ring with a tapered shank with a bright polish finish. Condition is new. Ring size is a six. One round brilliant cut diamond is set in a four prong platinum mount located in the top center. Trademark is Stuller. Identified with markings of "14K & Plat". Containing:

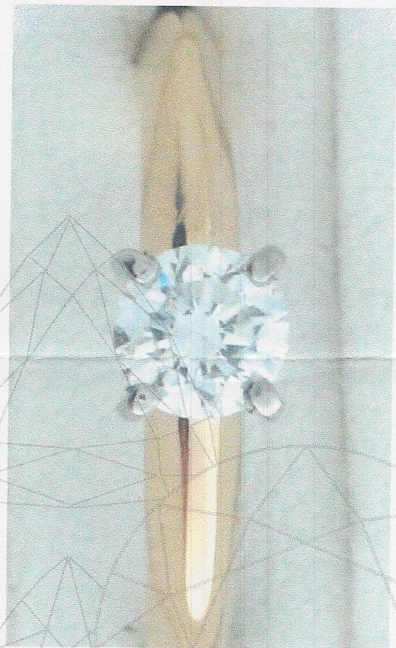
One prong set round brilliant cut diamond, measuring 4.74 - 4.66 x 2.99mm (depth est.), 2.00% GTCF approximate weight of 0.41ct. This diamond was graded by the Gemological Institute of America (GIA) on Report # 1440 2324. Diamond was checked and found to be in order with the exception of the measurements and girdle thickness. Girdle is slightly thick throughout..

Clarity **SI-1**
Color **E**
Cut **Very Good**

Total Weight of Diamonds
Total Weight of Engagement Ring

Total Retail replacement value

GOLD @ 1506.80 US



0.41ct.
2.89 gm

US\$ 2250.00

Date: May 14, 2011

James L. Peddicord
*** James L .Peddicord ***
*** Graduate Gemologist***