

Appraisal No: 000009345001

Purpose of Appraisal  
Function of Appraisal

**Retail replacement value  
Insurance**

One stamped 14KT & platinum two-tone gold ladies hand assembled diamond engagement ring with a tapered shank with a bright polish finish. Condition is new. One round brilliant cut diamond is set in the top center using a four prong platinum mount. Two round brilliant cut diamonds are set adjacent to the major stone with each stone set in a four prong platinum mount. Trademark is 14 K and Pt head. Identified with markings of "14K & Plat". Containing:

One prong set round brilliant cut diamond, measuring 5.42 - 5.37 x 3.18mm (depth est.), 7.00% GTCF approximate weight of 0.60ct. All diamonds in this article were graded while set in ring. Actual and estimated measurements were used to calculate the diamond weight by use of formulas. Color grade was obtained by use of formulas.

Clarity **SI-2 to I-1**  
Color **G - H**  
Cut **Very Good**

Two prong set round brilliant cut diamonds, measuring 4.86 - 4.81 x 2.90mm (depth est.) approximate total weight of 2 Stones = 0.83ct. Average estimated measurements were used to calculate the diamond weight by use of formulas. Color grade was estimated.

Clarity **SI-1 to SI-2**  
Color **F - H**  
Cut **Very Good**

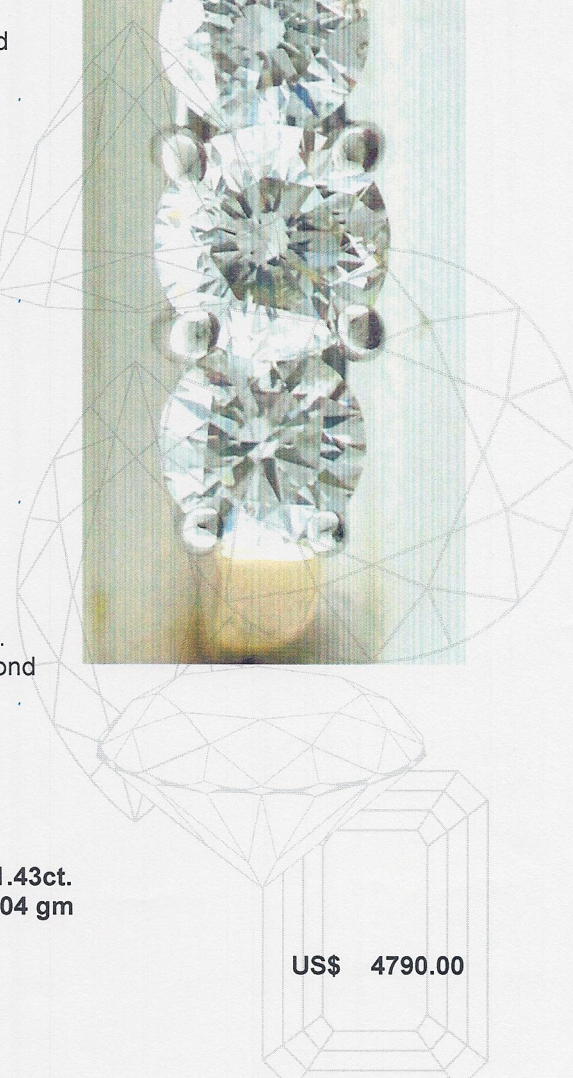
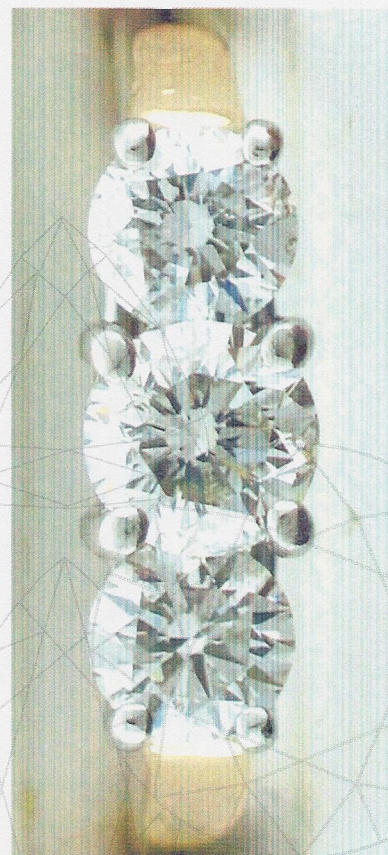
Total Weight of Diamonds  
Total Weight of Engagement Ring

**1.43ct.  
5.04 gm**

**Total Retail replacement value**

**US\$ 4790.00**

**GOLD @ 1115.10 US**



Date: December 11, 2009

*James L. Peddicord*  
\*\*\* James L. Peddicord \*\*\*  
\*\*\* Graduate Gemologist\*\*\*