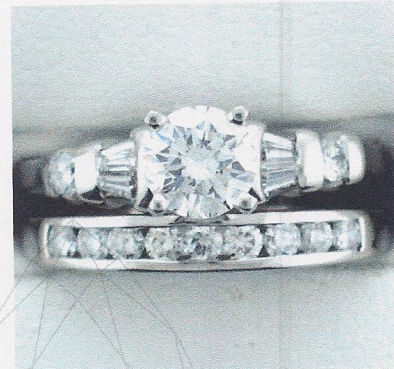


Appraisal No: 00009341002



Purpose of Appraisal
Function of Appraisal

Retail replacement value
Insurance

One pair stamped platinum ladies hand assembled diamond wedding & engagement ring with a flat shank with a bright polish finish. Condition is new. The rings are size four. One round brilliant cut diamond located in the top center is set in a four prong mount. Two tapered baguettes are set on each side of the major stone located in the top of the ring shank. Below the tapered baguettes, one round brilliant cut diamond is channel set on each side of the major stone. Trademark is not evident. Identified with markings of "Plat". Containing:

One prong set round brilliant cut diamond, measuring 5.39 - 5.32 x 3.22mm (depth est.) approximate weight of 0.56ct. Clarity of SI-1, color of E, cut is very good. All diamonds in this article were graded while set. Actual and estimated measurements were used to calculate the diamond weight by use of formulas. Color grade was obtained by use of colorimeter.

Four channel set baguette cut (tapered) diamonds, measuring 3.20 x 1.80 x 1.53mm (depth est.) approximate total weight of 4 Stones = 0.20ct. Clarity of VVS, color of E - G, cut is very good. Average estimated measurements were used to calculate the diamond weight by use of formulas. Color grade was estimated.

Two channel set round brilliant cut diamonds, measuring 2.23 - 2.20 x 1.33mm (depth est.) approximate total weight of 2 Stones = 0.08ct. Clarity of SI-1, color of E - G, cut is very good. Average estimated measurements were used to calculate the diamond weight by use of formulas. Color grade was estimated.

Nine channel set round brilliant cut diamonds, measuring 1.80 - 1.77 x 1.07mm (depth est.) approximate total weight of 9 Stones = 0.19ct. Clarity of VS, color of E - G, cut is very good. Average estimated measurements were used to calculate the diamond weight by use of formulas. Color grade was estimated. One of the diamonds in this group is damaged..

Total Weight of Diamonds
Total Weight of Wedding & Engagement Ring

1.03ct.
8.80 gm

Total Retail replacement value

US\$ 6155.00

PLATINUM @ 1439.00 US

Date: December 7, 2009

James L. Peddicord
*** James L. Peddicord ***
*** Graduate Gemologist***