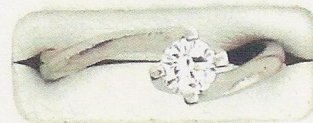


Appraisal No: 000011253004



Purpose of Appraisal  
Function of Appraisal

Retail replacement value  
Insurance

One ladies stamped platinum hand assembled diamond engagement ring with a tapered shank with a bright polish finish. Condition is very good. One round brilliant cut diamond is set in four prongs made from a split cut shank. Trademark is not evident. Identified with markings of "Pt 950". Containing:

One prong set round brilliant cut diamond, measuring 4.49 - 4.44 x 2.72mm (depth est.) approximate weight of 0.33ct. Diamond was graded while set. Estimated and actual measurements were used to calculate the diamond weight by use of formulas. Color grade was estimated by use of diamond color comparison stones.

Clarity **VVS-1**  
Color **F**  
Cut **Excellent**

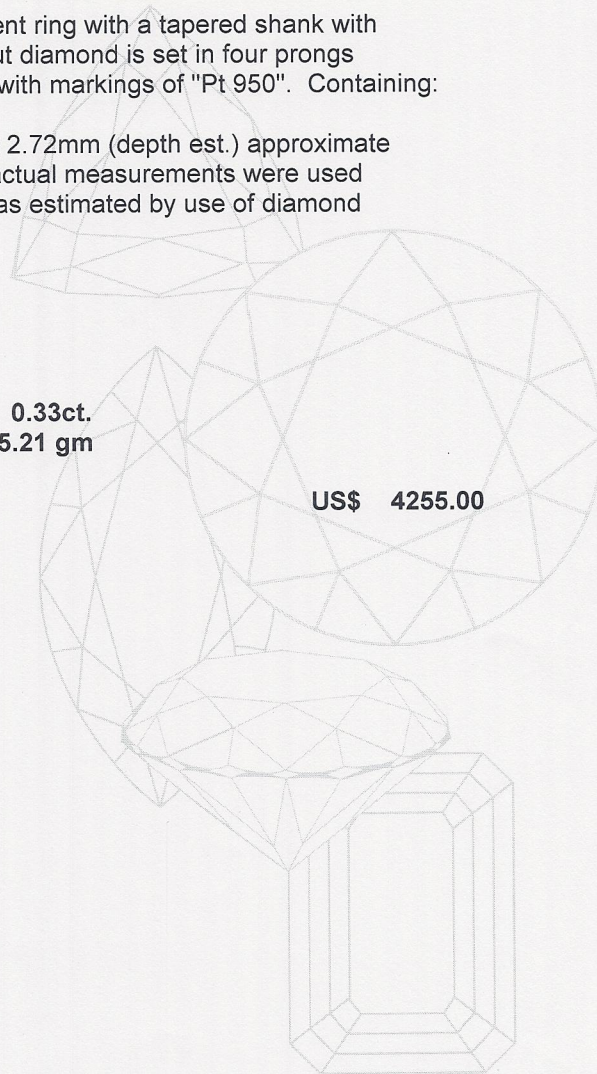
Total Weight of Diamonds  
Total Weight of Engagement Ring

0.33ct.  
5.21 gm

Total Retail replacement value

US\$ 4255.00

PLATINUM @ 1827.00 US



Date: September 10, 2011

*James L. Peddicord*  
\*\*\* James L. Peddicord \*\*\*  
\*\*\* Graduate Gemologist\*\*\*